



Ningbo Leboda Lighting Technology Co., Ltd

COMPANY PROFILE

Add: No.430, Kemao Road, Wangchun Industrial Zone, Ningbo, 315171, P.R.China.

Tel:+86-574-8815 5929

Fax:+86-574-8802 1997

web://www.lebodaworld.com

Email: tony@lebodaworld.com

TABLE OF CONTENTS

- ABOUT LEBODA LIGHTING
- PRODUCTS RANGES
- OUR ADVANTAGES
- VISION
- APPENDIX

Who we are—Professional LED lighting manufacturer for outdoor

- Ningbo LEBODA Lighting is a young, but fast-growing company, with the forefront of LED technology, we manufacture with our dedicated team to be able to supply quality long-life LED lighting products, which results in the fact that all products we offer are legally required European safety testing.
-

WE OFFER:

- LED solutions upon customer's requirements
 - LED street light
 - LED garden light
 - LED highbay light
 - LED flood light
 - LED water-proof light
-

OUR MAIN ADVANTAGES:

- Competitive price: we control cost at every step (materials, labor control, delivery, etc.) without sacrificing the quality. Top brand material sourcing, e.g. CREE, MeanWell or LEDiL.
- Die-casting & painting factory is making OEM production for OSRAM.
- Our Mould factory is making tools for Philips
- Quality Control; We provide warranty based on tests and quality measurements— provided technical parameters are actual values
- Research and development: professional R&D Department optimizes product development to ensure that the product supplied is of premium grade with the highest quality components, longest warranties and highest output per watt on the market.

OUR VISION & Values:

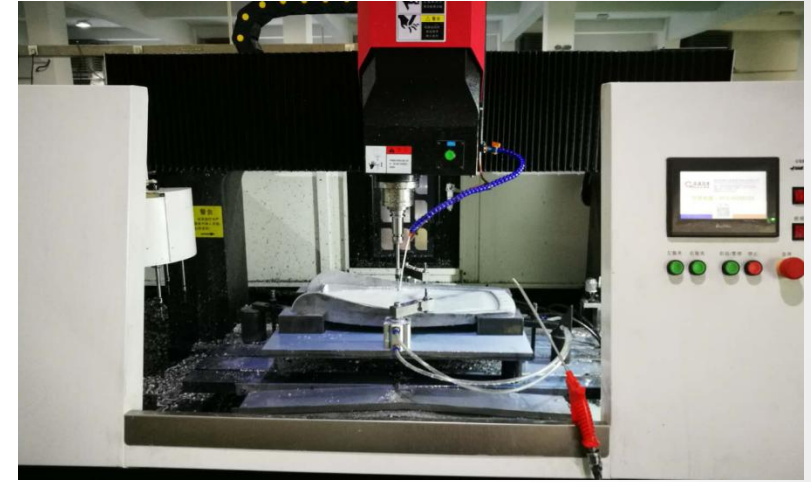
Vision: Develop professional and innovative lighting solutions and products reducing operating costs and providing direction for the good of the community

Our philosophy: Be Bright • Be Happy

THE FACTORY TOUR



THE FACTORY TOUR



TESTING EQUIPMENTS



ACTIVITIES--ON THE FAIR

2016.04HK Lighting Fair



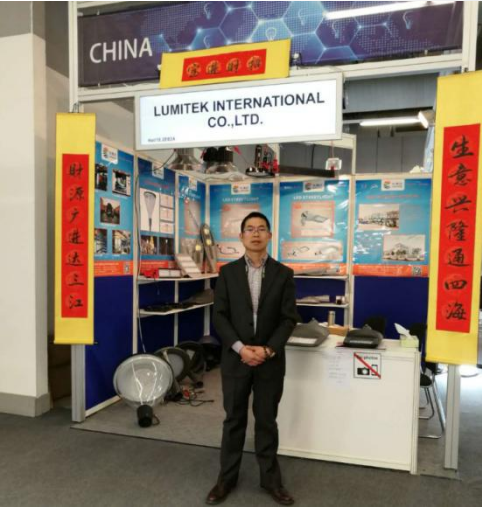
2016.10HK Lighting Fair



2017.06 Guangzhou International Fair



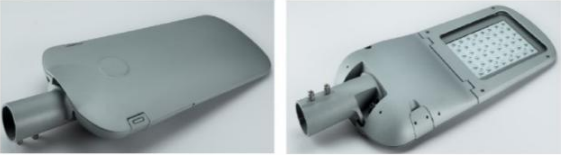
2018.03 Frankfurt lighting Fair



PRODUCTS SHOW



- Key features:**
- 1, Modern streamline design
 - 2, Toolless opening, free maintenance
 - 3, Smooth roof for self-cleaning
 - 4, IP66, IK09



THANKS

THANK YOU!
